



# CHURCHILL

COUNTRY & EQUESTRIAN

FOXBURY FARM STABLES, SEVENOAKS



Foxbury Farm Barn, Pond Lane, Ivy Hatch, Sevenoaks, TN15 0LW  
Monthly Rental of £1,200 (inclusive of water and electricity)

A fantastic opportunity to rent a brand new 4 box self-contained stable yard with some 8 acres located in Ivy Hatch, Sevenoaks. Foxbury Farm is in a popular location with excellent walking, cycling and riding routes easily accessible from quiet country lanes. Ightham Moat is close by as well as Oldbury Hill and Knole Park.

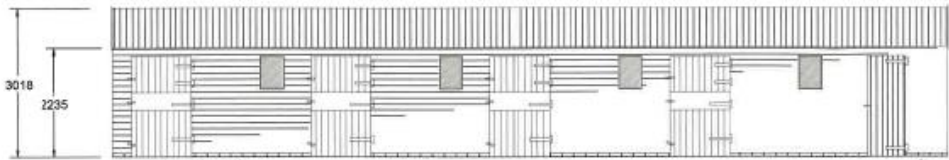
The 4-box yard is to comprise of 4 wooden Chart stables and a tack room with plenty of parking for multiple vehicles and a horsebox. Water and electricity connected and included in the rental price.

The c.8 acres will be fenced and may be subdivided by tenants.

Monthly rental of £1,200 inclusive of water and electricity. Available from July 2023



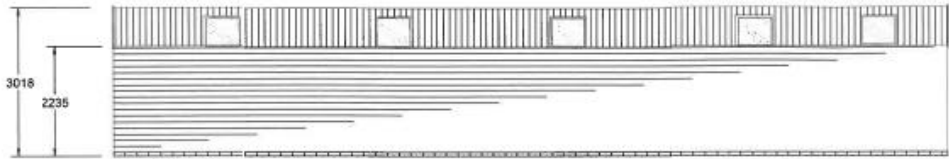
Proposed stable plan for Foxbury Farm Stables



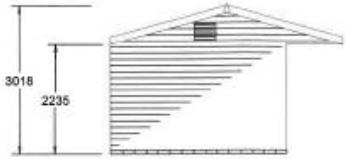
Front Elevation



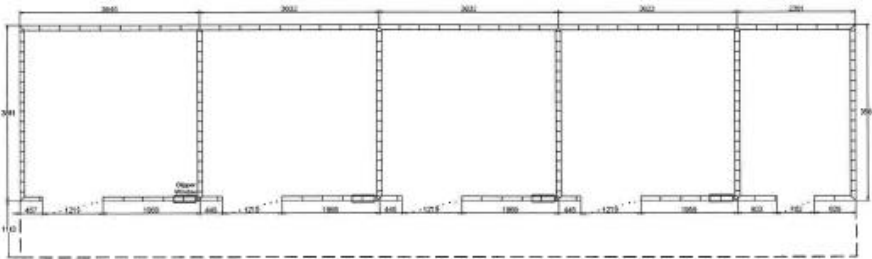
Side Elevations



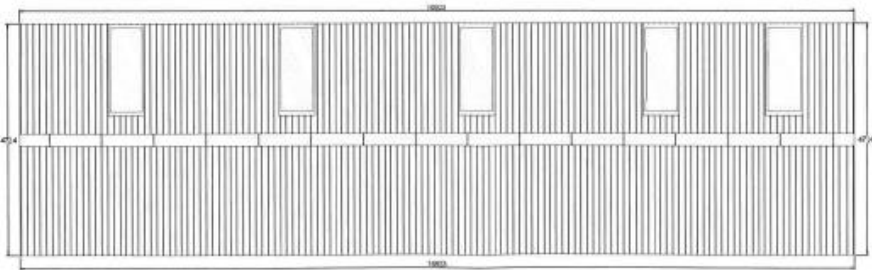
Rear Elevation



Base Plan



Roof Plan



Scale Bar 1:100

UKLAND and FARMS.co.uk



Viewing strictly by appointment through the Landlord's Sole Agents – Churchill Country & Equestrian Estate Agents – 01403 700222

MONEY LAUNDERING REGULATIONS 2003 intending purchasers will be asked to produce identification and proof of financial status when an offer is received. We would ask for your co-operation in order that there will be no delay in agreeing the sale.  
THE PROPERTY MISDESCRIPTIONS ACT 1991 The Agent has not tested any apparatus, equipment, fixtures and fittings or services and so cannot verify that they are in working order or fit for the purpose. A Buyer is advised to obtain verification from their Solicitor or Surveyor. References to the Tenure of a Property are based on information supplied by the Seller. The Agent has not had sight of the title documents. A Buyer is advised to obtain verification from their Solicitor. You are advised to check the availability of this property before travelling any distance to view. We have taken every precaution to ensure that these details are accurate and not misleading. If there is any point which is of particular importance to you, please contact us and we will provide any information you require. This is advisable, particularly if you intend to travel some distance to view the property. The mention of any appliances and services within these details does not imply that they are in full and efficient working order. These particulars are in draft form awaiting Vendors confirmation of their accuracy. These details must therefore be taken as a guide only and approved details should be requested from the agents.